



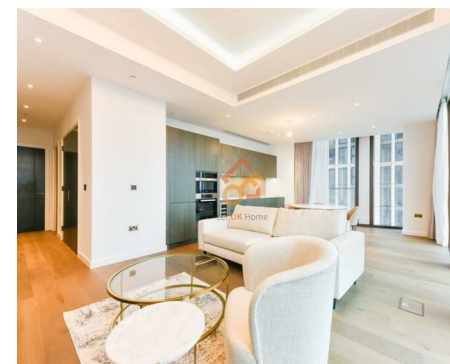
萊英家  
Let UK Home

2 Bedrooms

Flat

Located in London

£5,600 Per Month



[info@letukhome.co.uk](mailto:info@letukhome.co.uk)

<https://www.letukhome.co.uk/>

02045348146



# Apartment B2702, N9 One Thames 8 Carnation Way

London | | SW8 5JF



Let UK Home are excited to offer this spectacular two bedroom apartment in One Thames City in Nine Elms.

This property comprises a large bright open plan kitchen and living room with great views, two double bedrooms with fitted wardrobes (master en-suite), a large family sized bathroom and ample storage.

The apartment enjoys 24-hour concierge service, constant temperature skylight swimming pool, private club, gym, private cinema, private banquet hall, library, red wine and cigar bar, sky terrace viewing bar, sunken courtyard and other facilities.

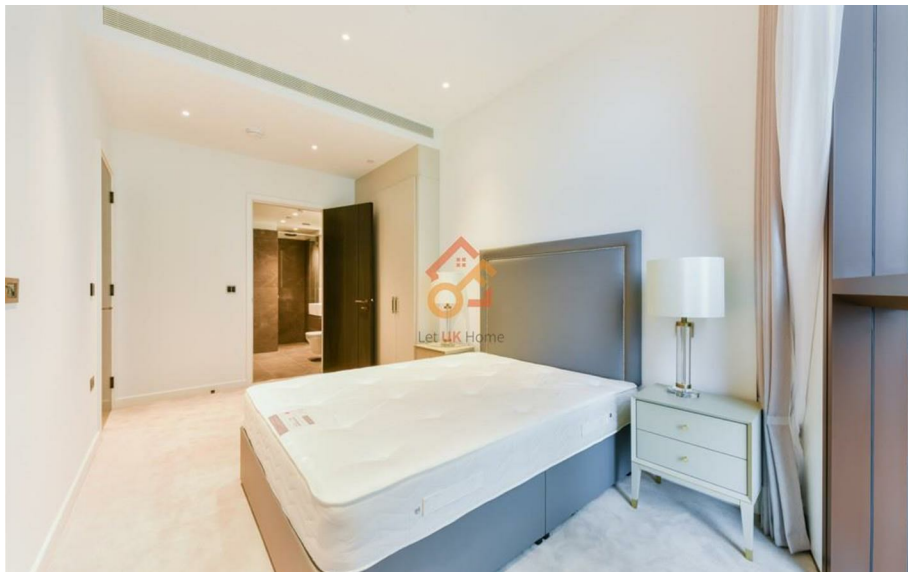
The apartment is close to the transportation hub, with multiple modes of transportation such as subway, train and Thames Clippers. The nearest station to the project is Vauxhal, which is within walking distance. There is the Victoria subway line and multiple train and bus lines to central London such as the Houses of Parliament, Kensington, Oxford Street, Tower Bridge.

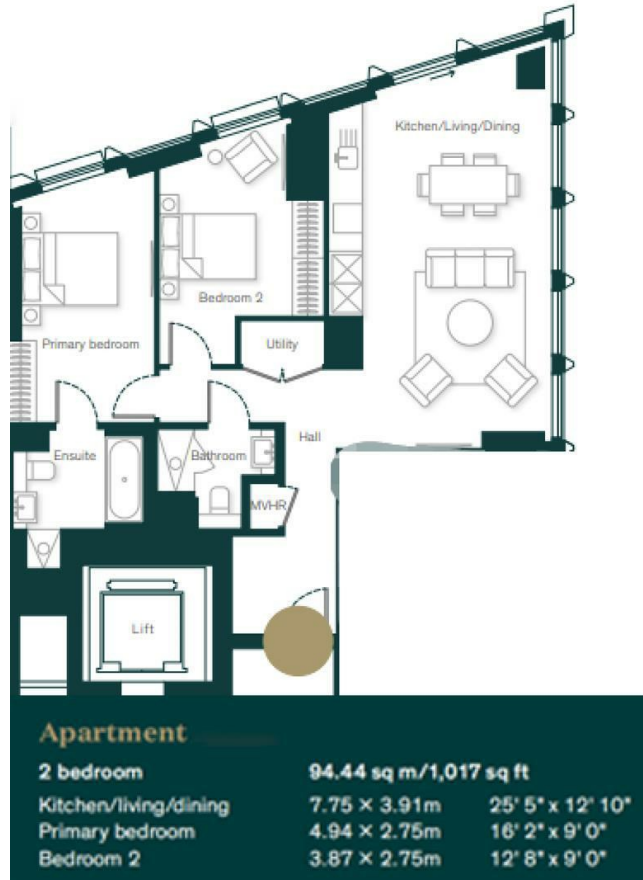
# Apartment B2702, N9 One Thames 8 Carnation

£5,600 Per Month



- 27th Floor
- 24h Security
- The Gym
- Concierge Service
- Swimming Pool
- Cinema & Game Room





6/F Two Kingdom Street  
London  
W2 6BD

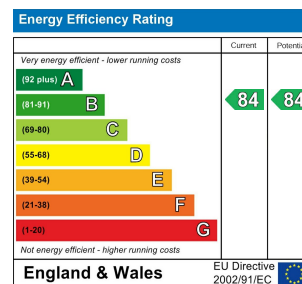
02045348146

info@letukhome.co.uk

**Council Tax Band: F**

**Local Authority:**

Agents Note: Whilst every care has been taken to prepare these particulars, they are for guidance purposes only. All measurements are approximate and are for general guidance purposes only and whilst every care has been taken to ensure their accuracy, they should not be relied upon and potential buyers/tenants are advised to recheck the measurements.



<https://www.letukhome.co.uk/>